

PART OF SEC. 32, T.7N., R.3E., S.L.B. & M.
EVERGREEN PARK SUBDIVISION NO. 1
 LOTS 2-20, 36-41, 185-188, 228, 231-233

TAXING UNIT: 58

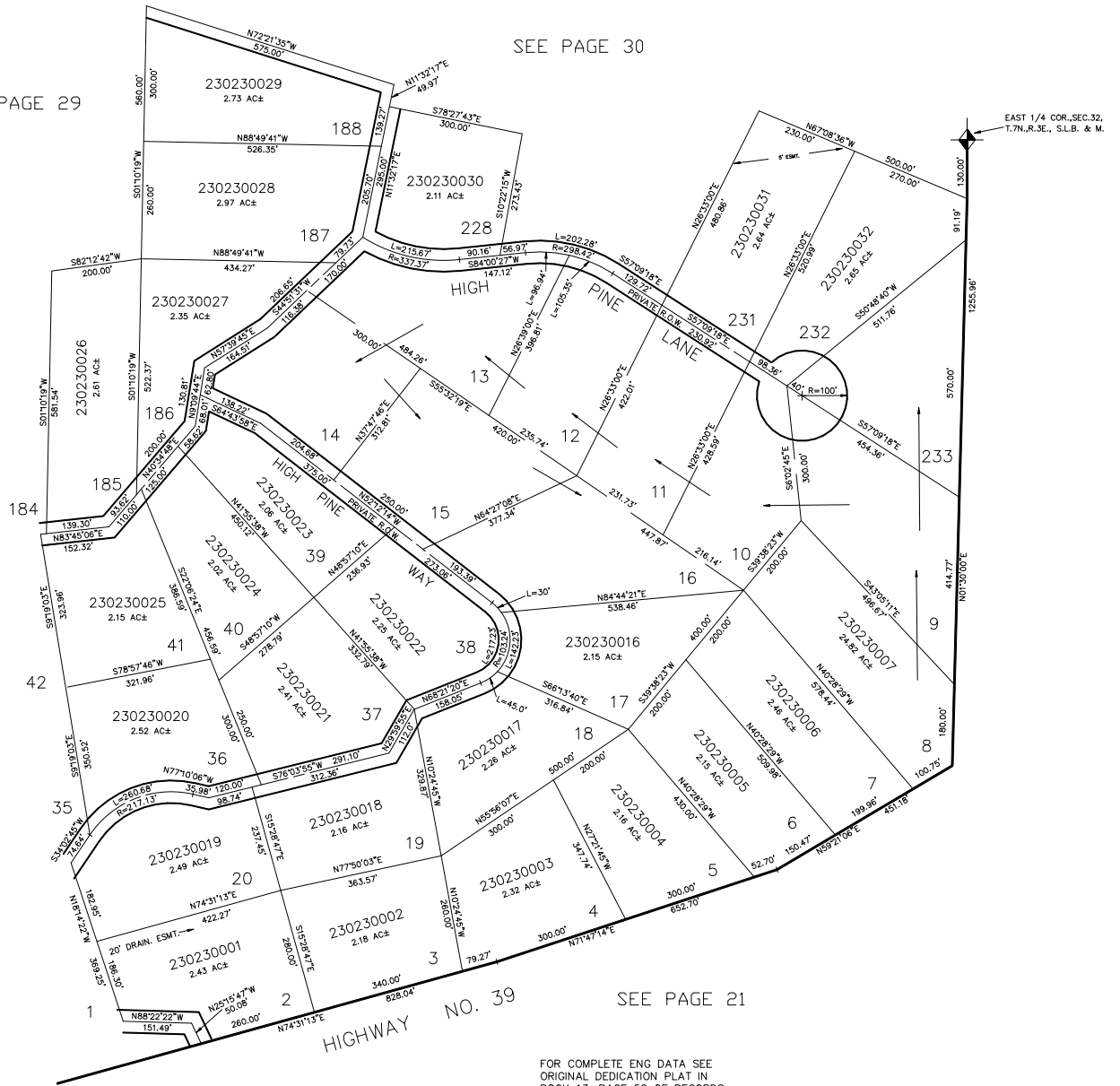
IN WEBER COUNTY

SCALE 1" = 200'

SEE PAGE 30

SEE PAGE 29

SEE PAGE 22



FOR COMPLETE ENG DATA SEE
 ORIGINAL DEDICATION PLAT IN
 BOOK 13, PAGE 52 OF RECORDS.

ALL DASHED LINES SHOWN
 ON LOT LINES ARE 10' UTILITY
 EASEMENTS UNLESS OTHERWISE NOTED.